



City of Friendswood  
Demographic and Income Profile

Prepared for:  
Bay Area Commercial Real Estate Network (BACREN)

Prepared by:  
Colin Fox, CCIM  
Colin Fox & Associates, LLC

281.333.4692  
colinfox@colinfox.com  
www.colinfox.com

The information contained herein is from sources believed reliable, but neither Colin Fox & Associates, LLC including the author of this report, have confirmed this information. Any warranty or representation of accuracy is expressly disclaimed. The Recipient of this report is cautioned that it is the Recipient's responsibility to confirm the accuracy and completeness of the information provided, including such independent investigation of this information as may appear necessary to determine its suitability for Recipient's needs.



# Demographic and Income Profile

Report prepared by Colin Fox & Associates

Places: Friendswood city, TX

Summary	2000	2007	2012
Population	29,037	32,996	36,135
Households	10,107	11,469	12,556
Families	8,081	9,259	10,107
Average Household Size	2.85	2.85	2.86
Owner Occupied HUs	8,095	9,532	10,472
Renter Occupied HUs	2,012	1,937	2,084
Median Age	36.9	39.3	40.0

Trends: 2007-2012 Annual Rate	Area	National
Population	1.83%	1.22%
Households	1.83%	1.27%
Families	1.77%	1.00%
Owner HHs	1.9%	1.29%
Median Household Income	3.51%	3.29%

Households by Income	2000		2007		2012	
	Number	Percent	Number	Percent	Number	Percent
< \$15,000	553	5.5%	419	3.7%	363	2.9%
\$15,000 - \$24,999	592	5.9%	394	3.4%	356	2.8%
\$25,000 - \$34,999	723	7.2%	644	5.6%	502	4.0%
\$35,000 - \$49,999	1,354	13.5%	942	8.2%	850	6.8%
\$50,000 - \$74,999	2,292	22.9%	2,311	20.1%	1,909	15.2%
\$75,000 - \$99,999	1,826	18.2%	1,885	16.4%	2,073	16.5%
\$100,000 - \$149,999	1,774	17.7%	2,782	24.3%	3,011	24.0%
\$150,000 - \$199,000	537	5.4%	1,086	9.5%	1,649	13.1%
\$200,000+	379	3.8%	1,007	8.8%	1,840	14.7%
Median Household Income	\$68,281		\$86,678		\$102,991	
Average Household Income	\$81,580		\$107,712		\$134,912	
Per Capita Income	\$28,615		\$37,074		\$46,404	

Population by Age	2000		2007		2012	
	Number	Percent	Number	Percent	Number	Percent
0 - 4	1,908	6.6%	2,218	6.7%	2,418	6.7%
5 - 9	2,406	8.3%	2,438	7.4%	2,657	7.4%
10 - 14	2,776	9.6%	2,893	8.8%	3,079	8.5%
15 - 19	2,328	8.0%	2,477	7.5%	2,620	7.3%
20 - 24	1,102	3.8%	1,703	5.2%	1,582	4.4%
25 - 34	3,015	10.4%	2,880	8.7%	3,601	10.0%
35 - 44	5,517	19.0%	5,192	15.7%	5,038	13.9%
45 - 54	4,795	16.5%	6,110	18.5%	6,826	18.9%
55 - 64	2,681	9.2%	3,995	12.1%	4,639	12.8%
65 - 74	1,401	4.8%	1,699	5.1%	2,110	5.8%
75 - 84	746	2.6%	902	2.7%	1,060	2.9%
85+	362	1.2%	492	1.5%	505	1.4%

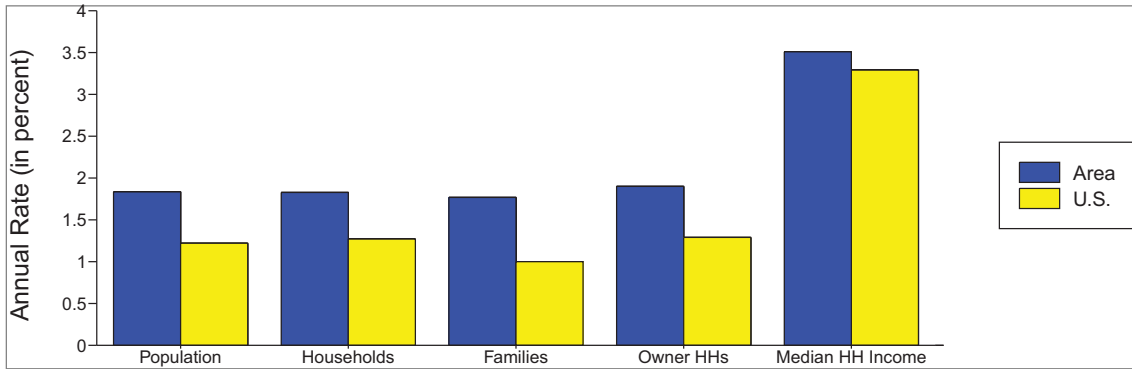
Race and Ethnicity	2000		2007		2012	
	Number	Percent	Number	Percent	Number	Percent
White Alone	26,158	90.1%	28,716	87.0%	31,180	86.3%
Black Alone	783	2.7%	1,126	3.4%	1,289	3.6%
American Indian Alone	115	0.4%	148	0.4%	163	0.5%
Asian Alone	695	2.4%	1,110	3.4%	1,271	3.5%
Pacific Islander Alone	4	0.0%	7	0.0%	7	0.0%
Some Other Race Alone	809	2.8%	1,240	3.8%	1,489	4.1%
Two or More Races	473	1.6%	649	2.0%	736	2.0%
Hispanic Origin (Any Race)	2,553	8.8%	4,090	12.4%	4,866	13.5%

Data Note: Income is expressed in current dollars.

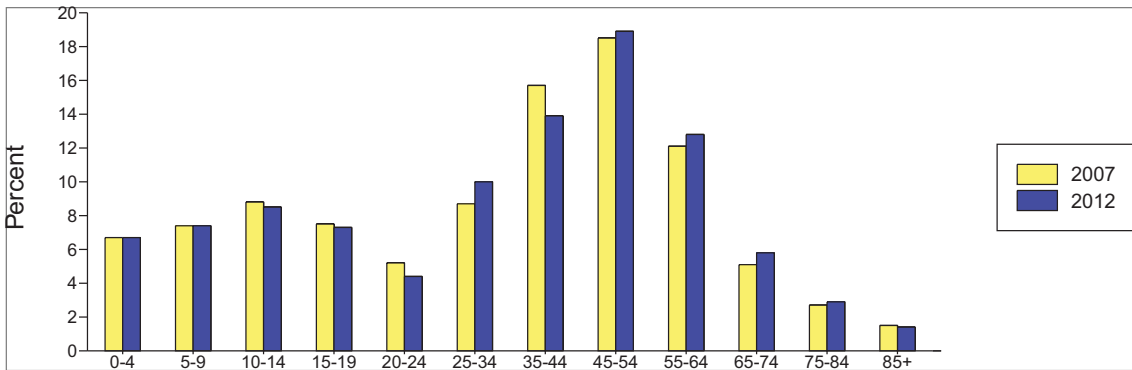
Source: U.S. Bureau of the Census, 2000 Census of Population and Housing. ESRI forecasts for 2007 and 2012.

Places: Friendswood city, TX

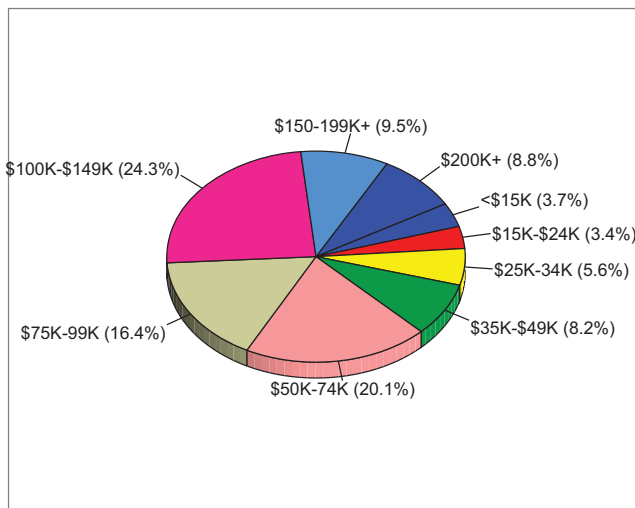
Trends 2007-2012



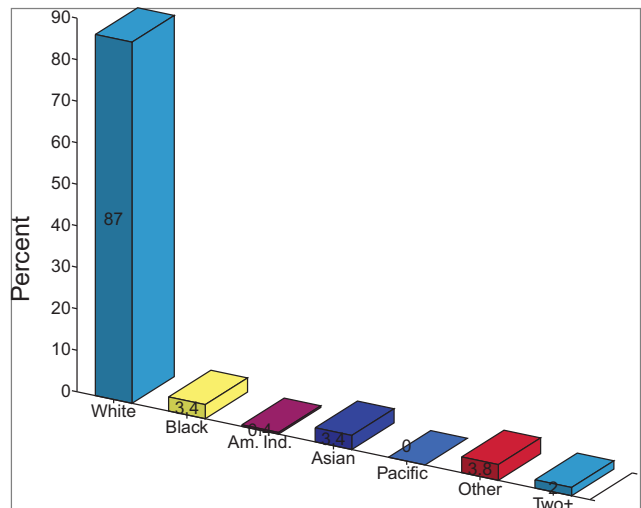
Population by Age



2007 Household Income



2007 Population by Race



2007 Percent Hispanic Origin: 12.4%