



City of Galveston
Demographic and Income Profile

Prepared for:
Bay Area Commercial Real Estate Network (BACREN)

Prepared by:
Colin Fox, CCIM
Colin Fox & Associates, LLC

281.333.4692
colinfox@colinfox.com
www.colinfox.com

The information contained herein is from sources believed reliable, but neither Colin Fox & Associates, LLC including the author of this report, have confirmed this information. Any warranty or representation of accuracy is expressly disclaimed. The Recipient of this report is cautioned that it is the Recipient's responsibility to confirm the accuracy and completeness of the information provided, including such independent investigation of this information as may appear necessary to determine its suitability for Recipient's needs.



Demographic and Income Profile

Report prepared by Colin Fox & Associates

Places: Galveston city, TX

Summary	2000	2007	2012
Population	57,247	60,503	64,241
Households	23,842	25,386	27,142
Families	13,744	14,215	14,931
Average Household Size	2.30	2.28	2.27
Owner Occupied HUs	10,399	11,251	11,919
Renter Occupied HUs	13,443	14,136	15,223
Median Age	35.5	36.5	37.2

Trends: 2007-2012 Annual Rate	Area	National
Population	1.21%	1.22%
Households	1.35%	1.27%
Families	0.99%	1.00%
Owner HHs	1.16%	1.29%
Median Household Income	3.04%	3.29%

Households by Income	2000		2007		2012	
	Number	Percent	Number	Percent	Number	Percent
< \$15,000	6,528	27.4%	5,707	22.5%	5,221	19.2%
\$15,000 - \$24,999	4,001	16.8%	3,415	13.5%	3,127	11.5%
\$25,000 - \$34,999	3,328	14.0%	3,348	13.2%	3,471	12.8%
\$35,000 - \$49,999	3,654	15.4%	3,921	15.4%	3,946	14.5%
\$50,000 - \$74,999	3,103	13.0%	3,983	15.7%	4,479	16.5%
\$75,000 - \$99,999	1,371	5.8%	2,049	8.1%	2,683	9.9%
\$100,000 - \$149,999	1,113	4.7%	1,902	7.5%	2,476	9.1%
\$150,000 - \$199,000	250	1.1%	460	1.8%	850	3.1%
\$200,000+	443	1.9%	604	2.4%	889	3.3%
Median Household Income	\$28,856		\$35,713		\$41,480	
Average Household Income	\$42,678		\$52,250		\$61,695	
Per Capita Income	\$18,275		\$22,477		\$26,652	

Population by Age	2000		2007		2012	
	Number	Percent	Number	Percent	Number	Percent
0 - 4	3,795	6.6%	4,036	6.7%	4,280	6.7%
5 - 9	3,818	6.7%	3,546	5.9%	3,663	5.7%
10 - 14	3,639	6.4%	3,663	6.1%	3,529	5.5%
15 - 19	4,030	7.0%	4,236	7.0%	4,353	6.8%
20 - 24	4,577	8.0%	5,211	8.6%	5,947	9.3%
25 - 34	8,316	14.5%	8,516	14.1%	8,724	13.6%
35 - 44	8,742	15.3%	7,761	12.8%	7,253	11.3%
45 - 54	7,486	13.1%	8,867	14.7%	9,258	14.4%
55 - 64	4,995	8.7%	6,326	10.5%	7,913	12.3%
65 - 74	4,273	7.5%	4,164	6.9%	4,781	7.4%
75 - 84	2,684	4.7%	3,000	5.0%	3,150	4.9%
85+	892	1.6%	1,178	1.9%	1,390	2.2%

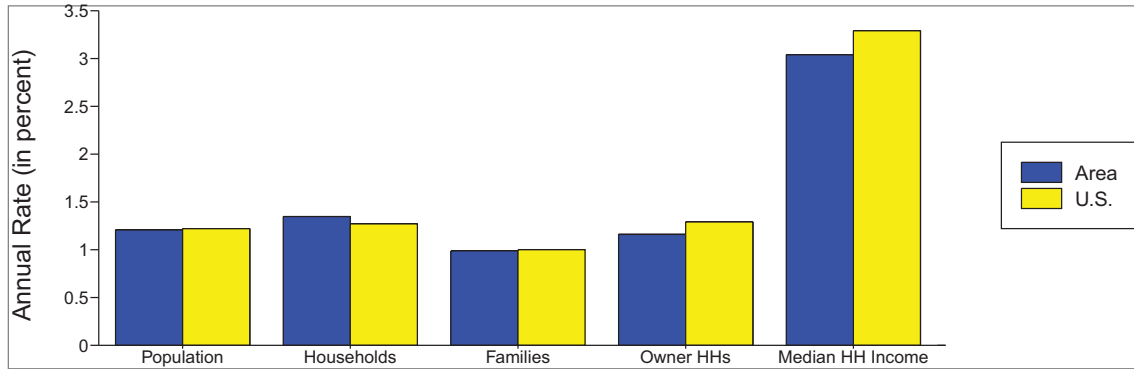
Race and Ethnicity	2000		2007		2012	
	Number	Percent	Number	Percent	Number	Percent
White Alone	33,582	58.7%	33,475	55.3%	35,323	55.0%
Black Alone	14,592	25.5%	16,175	26.7%	17,478	27.2%
American Indian Alone	243	0.4%	261	0.4%	269	0.4%
Asian Alone	1,839	3.2%	1,981	3.3%	2,066	3.2%
Pacific Islander Alone	42	0.1%	46	0.1%	48	0.1%
Some Other Race Alone	5,571	9.7%	7,005	11.6%	7,422	11.6%
Two or More Races	1,378	2.4%	1,560	2.6%	1,635	2.5%
Hispanic Origin (Any Race)	14,753	25.8%	18,731	31.0%	19,897	31.0%

Data Note: Income is expressed in current dollars.

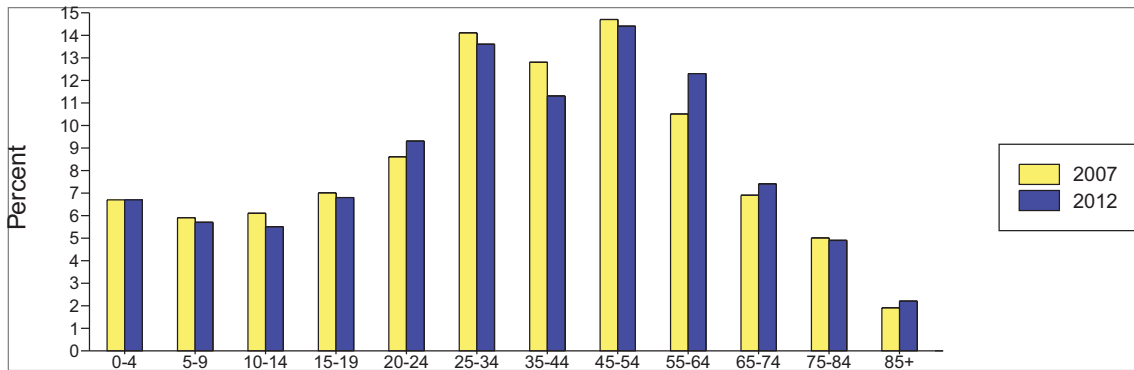
Source: U.S. Bureau of the Census, 2000 Census of Population and Housing. ESRI forecasts for 2007 and 2012.

Places: Galveston city, TX

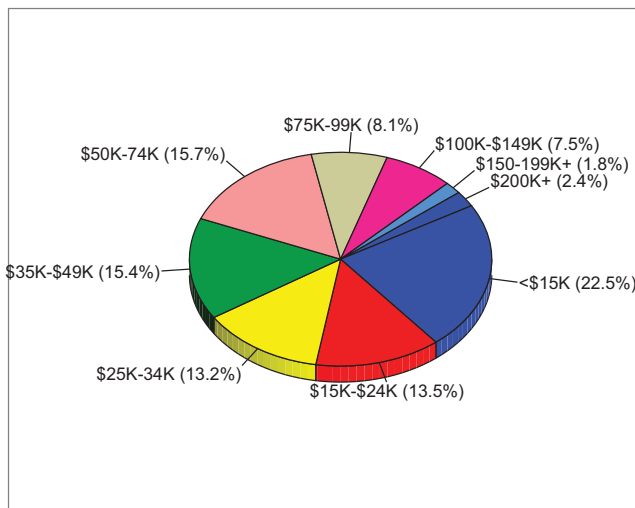
Trends 2007-2012



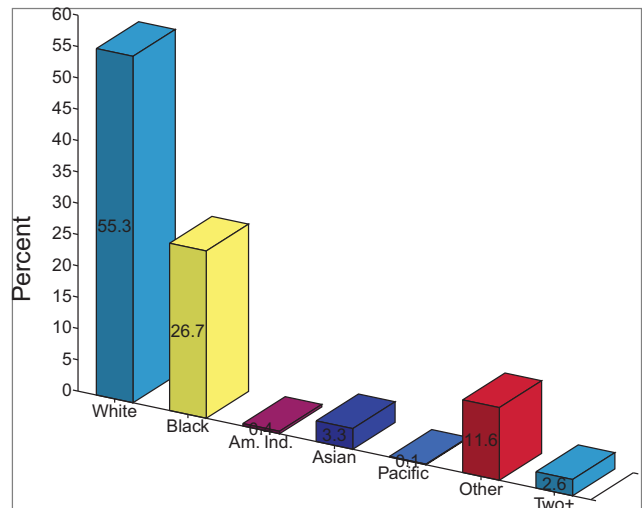
Population by Age



2007 Household Income



2007 Population by Race



2007 Percent Hispanic Origin: 31.0%