



City of Houston
Demographic and Income Profile

Prepared for:
Bay Area Commercial Real Estate Network (BACREN)

Prepared by:
Colin Fox, CCIM
Colin Fox & Associates, LLC

281.333.4692
colinfox@colinfox.com
www.colinfox.com

The information contained herein is from sources believed reliable, but neither Colin Fox & Associates, LLC including the author of this report, have confirmed this information. Any warranty or representation of accuracy is expressly disclaimed. The Recipient of this report is cautioned that it is the Recipient's responsibility to confirm the accuracy and completeness of the information provided, including such independent investigation of this information as may appear necessary to determine its suitability for Recipient's needs.



Demographic and Income Profile

Report prepared by Colin Fox & Associates

Places: Houston city, TX

Summary	2000	2007	2012
Population	1,953,631	2,109,413	2,231,419
Households	717,945	771,416	814,829
Families	457,549	479,369	499,137
Average Household Size	2.67	2.69	2.69
Owner Occupied HUs	328,741	358,751	375,784
Renter Occupied HUs	389,204	412,665	439,045
Median Age	31.0	32.3	32.8

Trends: 2007-2012 Annual Rate	Area	National
Population	1.13%	1.22%
Households	1.1%	1.27%
Families	0.81%	1.00%
Owner HHs	0.93%	1.29%
Median Household Income	3.39%	3.29%

Households by Income	2000		2007		2012	
	Number	Percent	Number	Percent	Number	Percent
< \$15,000	132,457	18.4%	113,135	14.7%	100,225	12.3%
\$15,000 - \$24,999	105,887	14.7%	81,930	10.6%	70,499	8.7%
\$25,000 - \$34,999	104,792	14.6%	94,080	12.2%	81,975	10.1%
\$35,000 - \$49,999	117,451	16.3%	122,207	15.8%	122,037	15.0%
\$50,000 - \$74,999	116,362	16.2%	141,424	18.3%	148,245	18.2%
\$75,000 - \$99,999	57,368	8.0%	75,722	9.8%	92,670	11.4%
\$100,000 - \$149,999	49,446	6.9%	78,764	10.2%	103,990	12.8%
\$150,000 - \$199,000	16,419	2.3%	29,030	3.8%	37,648	4.6%
\$200,000+	18,715	2.6%	35,113	4.6%	57,529	7.1%
Median Household Income	\$36,718		\$46,075		\$54,441	
Average Household Income	\$53,939		\$69,773		\$85,302	
Per Capita Income	\$20,101		\$25,723		\$31,368	

Population by Age	2000		2007		2012	
	Number	Percent	Number	Percent	Number	Percent
0 - 4	160,797	8.2%	171,090	8.1%	180,868	8.1%
5 - 9	154,638	7.9%	158,051	7.5%	159,277	7.1%
10 - 14	139,691	7.2%	155,039	7.3%	153,250	6.9%
15 - 19	138,762	7.1%	148,978	7.1%	160,545	7.2%
20 - 24	161,754	8.3%	158,159	7.5%	191,702	8.6%
25 - 34	354,444	18.1%	360,019	17.1%	342,273	15.3%
35 - 44	305,738	15.6%	303,354	14.4%	309,212	13.9%
45 - 54	235,249	12.0%	279,006	13.2%	293,096	13.1%
55 - 64	138,493	7.1%	189,945	9.0%	232,034	10.4%
65 - 74	93,086	4.8%	100,018	4.7%	114,420	5.1%
75 - 84	53,439	2.7%	63,356	3.0%	66,218	3.0%
85+	17,540	0.9%	22,398	1.1%	28,523	1.3%

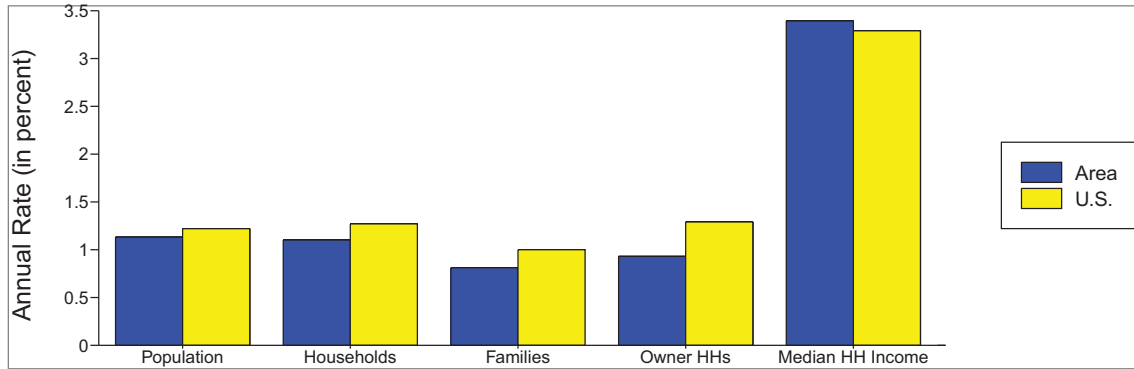
Race and Ethnicity	2000		2007		2012	
	Number	Percent	Number	Percent	Number	Percent
White Alone	962,610	49.3%	975,899	46.3%	996,008	44.6%
Black Alone	494,496	25.3%	523,255	24.8%	541,024	24.2%
American Indian Alone	8,568	0.4%	9,543	0.5%	10,221	0.5%
Asian Alone	103,694	5.3%	123,983	5.9%	139,031	6.2%
Pacific Islander Alone	1,182	0.1%	1,372	0.1%	1,514	0.1%
Some Other Race Alone	321,603	16.5%	403,254	19.1%	463,489	20.8%
Two or More Races	61,478	3.1%	72,107	3.4%	80,132	3.6%
Hispanic Origin (Any Race)	730,865	37.4%	906,960	43.0%	1,034,926	46.4%

Data Note: Income is expressed in current dollars.

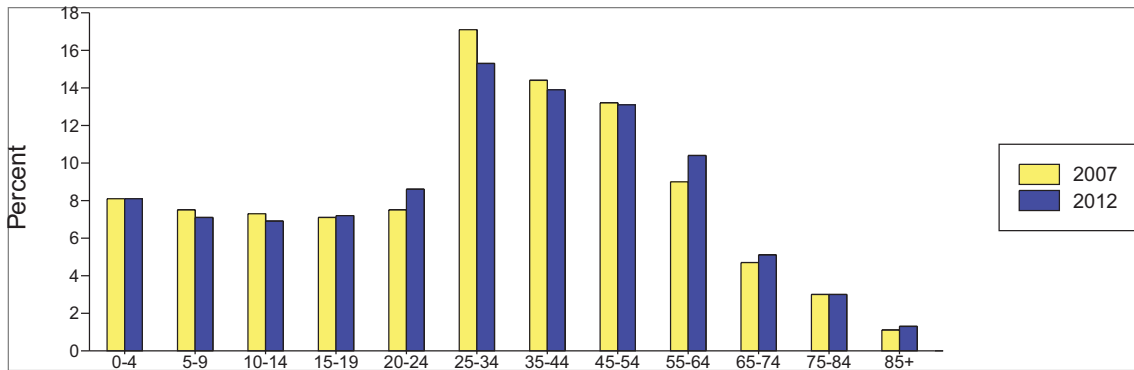
Source: U.S. Bureau of the Census, 2000 Census of Population and Housing. ESRI forecasts for 2007 and 2012.

Places: Houston city, TX

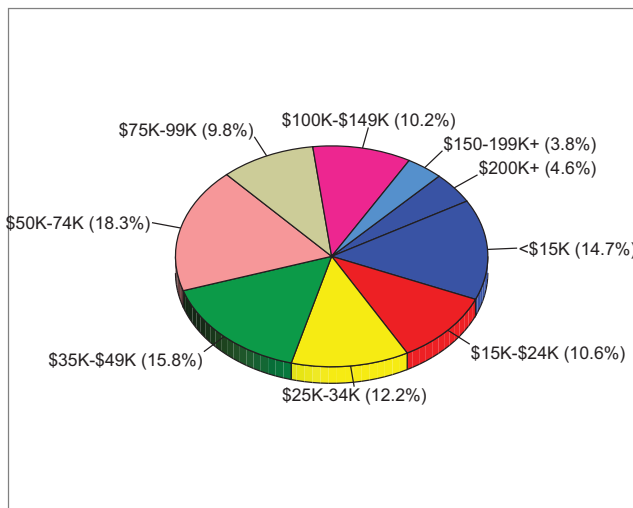
Trends 2007-2012



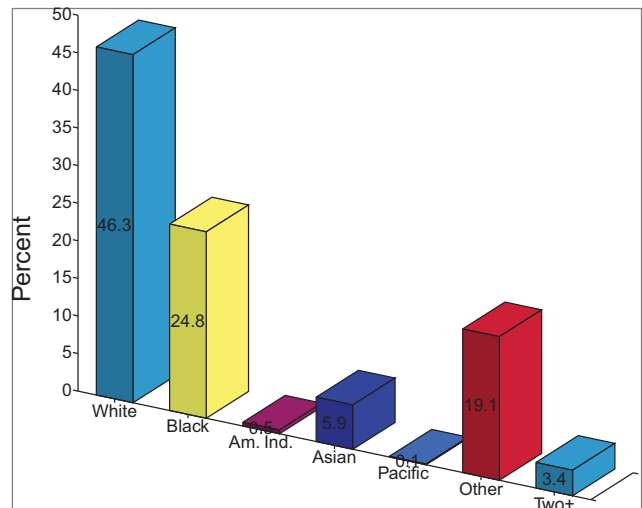
Population by Age



2007 Household Income



2007 Population by Race



2007 Percent Hispanic Origin: 43.0%