



City of La Porte  
Demographic and Income Profile

Prepared for:  
Bay Area Commercial Real Estate Network (BACREN)

Prepared by:  
Colin Fox, CCIM  
Colin Fox & Associates, LLC

281.333.4692  
colinfox@colinfox.com  
www.colinfox.com

The information contained herein is from sources believed reliable, but neither Colin Fox & Associates, LLC including the author of this report, have confirmed this information. Any warranty or representation of accuracy is expressly disclaimed. The Recipient of this report is cautioned that it is the Recipient's responsibility to confirm the accuracy and completeness of the information provided, including such independent investigation of this information as may appear necessary to determine its suitability for Recipient's needs.



# Demographic and Income Profile

Report prepared by Colin Fox & Associates

Places: La Porte city, TX

Summary	2000	2007	2012
Population	31,880	34,416	36,522
Households	10,928	11,849	12,571
Families	8,575	9,186	9,674
Average Household Size	2.90	2.88	2.88
Owner Occupied HUs	8,438	9,274	9,808
Renter Occupied HUs	2,490	2,576	2,763
Median Age	32.6	34.7	35.4

Trends: 2007-2012 Annual Rate	Area	National
Population	1.19%	1.22%
Households	1.19%	1.27%
Families	1.04%	1.00%
Owner HHs	1.13%	1.29%
Median Household Income	3.12%	3.29%

Households by Income	2000		2007		2012	
	Number	Percent	Number	Percent	Number	Percent
< \$15,000	916	8.4%	780	6.6%	681	5.4%
\$15,000 - \$24,999	923	8.5%	702	5.9%	539	4.3%
\$25,000 - \$34,999	1,028	9.4%	818	6.9%	716	5.7%
\$35,000 - \$49,999	1,734	15.9%	1,366	11.5%	1,193	9.5%
\$50,000 - \$74,999	3,005	27.5%	2,847	24.0%	2,500	19.9%
\$75,000 - \$99,999	1,997	18.3%	2,256	19.0%	2,329	18.5%
\$100,000 - \$149,999	1,015	9.3%	2,295	19.4%	3,263	26.0%
\$150,000 - \$199,000	211	1.9%	524	4.4%	753	6.0%
\$200,000+	89	0.8%	261	2.2%	598	4.8%
Median Household Income	\$55,905		\$68,991		\$80,437	
Average Household Income	\$60,887		\$78,160		\$92,714	
Per Capita Income	\$21,178		\$27,019		\$32,026	

Population by Age	2000		2007		2012	
	Number	Percent	Number	Percent	Number	Percent
0 - 4	2,519	7.9%	2,657	7.7%	2,830	7.7%
5 - 9	2,569	8.1%	2,440	7.1%	2,603	7.1%
10 - 14	2,770	8.7%	2,333	6.8%	2,616	7.2%
15 - 19	2,516	7.9%	2,477	7.2%	2,265	6.2%
20 - 24	1,931	6.1%	2,440	7.1%	2,178	6.0%
25 - 34	4,813	15.1%	4,985	14.5%	5,548	15.2%
35 - 44	5,620	17.6%	4,958	14.4%	5,122	14.0%
45 - 54	4,688	14.7%	5,717	16.6%	5,358	14.7%
55 - 64	2,248	7.1%	3,724	10.8%	4,732	13.0%
65 - 74	1,243	3.9%	1,498	4.4%	1,944	5.3%
75 - 84	675	2.1%	866	2.5%	935	2.6%
85+	288	0.9%	319	0.9%	390	1.1%

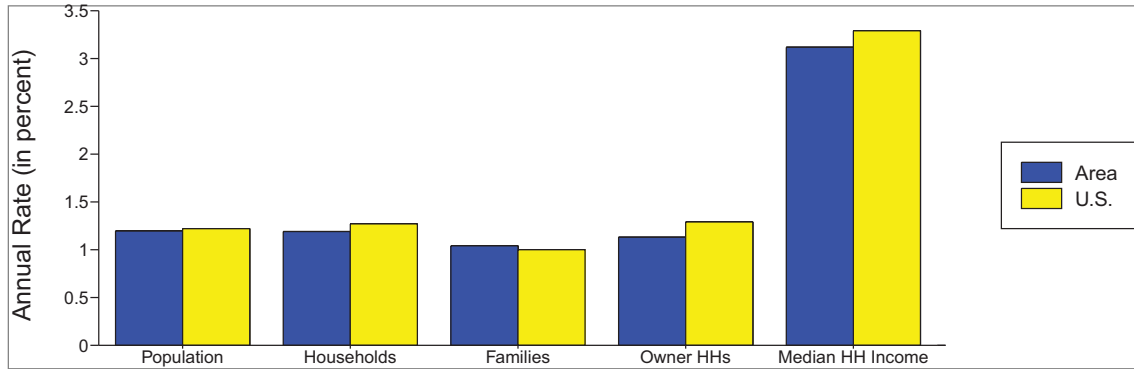
Race and Ethnicity	2000		2007		2012	
	Number	Percent	Number	Percent	Number	Percent
White Alone	25,946	81.4%	26,168	76.0%	26,449	72.4%
Black Alone	1,993	6.3%	2,332	6.8%	2,545	7.0%
American Indian Alone	154	0.5%	172	0.5%	188	0.5%
Asian Alone	359	1.1%	510	1.5%	615	1.7%
Pacific Islander Alone	25	0.1%	31	0.1%	36	0.1%
Some Other Race Alone	2,717	8.5%	4,272	12.4%	5,562	15.2%
Two or More Races	686	2.2%	931	2.7%	1,127	3.1%
Hispanic Origin (Any Race)	6,520	20.5%	10,127	29.4%	13,072	35.8%

Data Note: Income is expressed in current dollars.

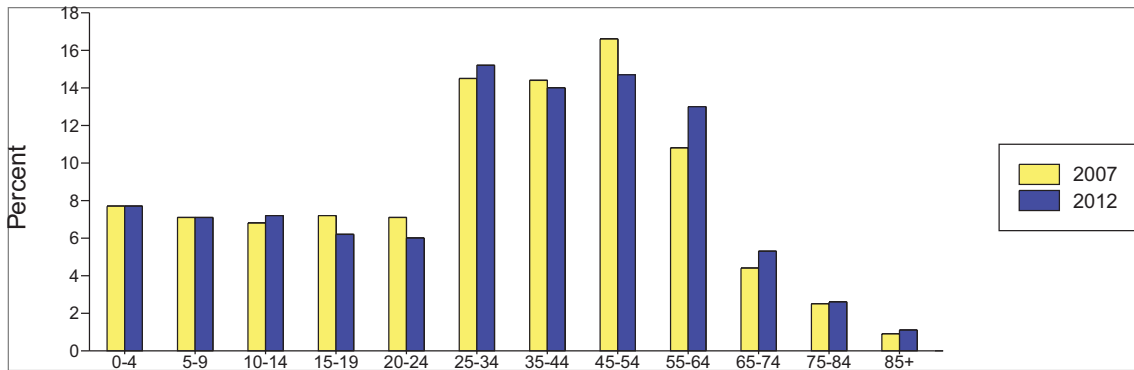
Source: U.S. Bureau of the Census, 2000 Census of Population and Housing. ESRI forecasts for 2007 and 2012.

Places: La Porte city, TX

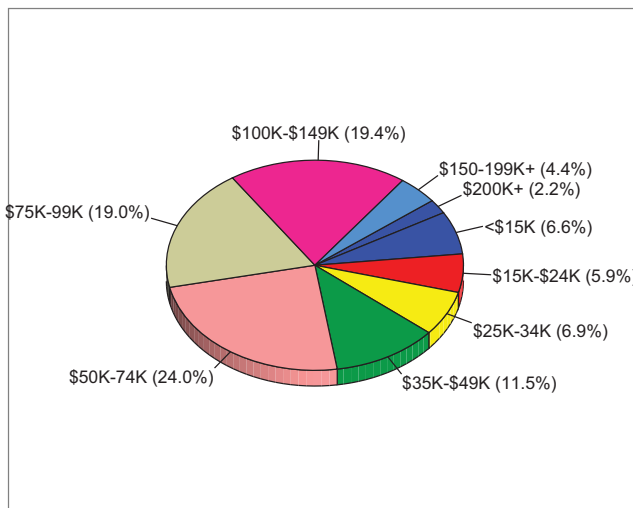
Trends 2007-2012



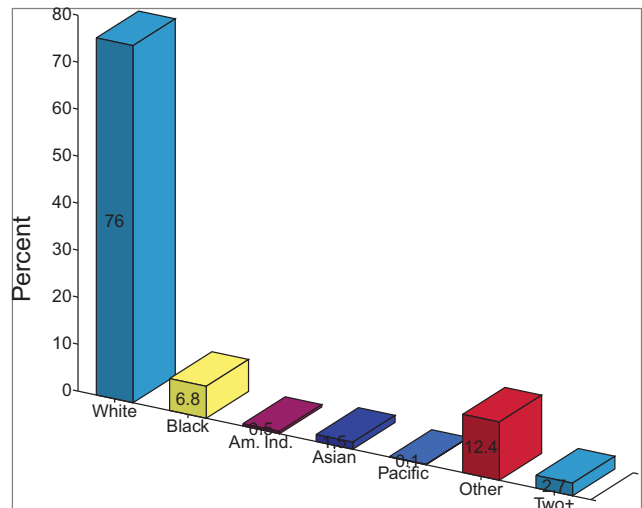
Population by Age



2007 Household Income



2007 Population by Race



2007 Percent Hispanic Origin: 29.4%