



City of Nassau Bay
Demographic and Income Profile

Prepared for:
Bay Area Commercial Real Estate Network (BACREN)

Prepared by:
Colin Fox, CCIM
Colin Fox & Associates, LLC

281.333.4692
colinfox@colinfox.com
www.colinfox.com

The information contained herein is from sources believed reliable, but neither Colin Fox & Associates, LLC including the author of this report, have confirmed this information. Any warranty or representation of accuracy is expressly disclaimed. The Recipient of this report is cautioned that it is the Recipient's responsibility to confirm the accuracy and completeness of the information provided, including such independent investigation of this information as may appear necessary to determine its suitability for Recipient's needs.



Demographic and Income Profile

Report prepared by Colin Fox & Associates

Places: Nassau Bay city, TX

Summary	2000	2007	2012
Population	4,170	4,312	4,480
Households	2,049	2,128	2,210
Families	1,213	1,243	1,278
Average Household Size	2.04	2.03	2.03
Owner Occupied HUs	1,234	1,299	1,335
Renter Occupied HUs	815	829	875
Median Age	46.7	49.6	50.5

Trends: 2007-2012 Annual Rate	Area	National
Population	0.77%	1.22%
Households	0.76%	1.27%
Families	0.56%	1.00%
Owner HHs	0.55%	1.29%
Median Household Income	3.83%	3.29%

Households by Income	2000		2007		2012	
	Number	Percent	Number	Percent	Number	Percent
< \$15,000	160	7.7%	107	5.0%	84	3.8%
\$15,000 - \$24,999	191	9.2%	133	6.3%	96	4.3%
\$25,000 - \$34,999	259	12.5%	190	8.9%	138	6.2%
\$35,000 - \$49,999	259	12.5%	264	12.4%	302	13.7%
\$50,000 - \$74,999	387	18.6%	419	19.7%	321	14.5%
\$75,000 - \$99,999	266	12.8%	228	10.7%	312	14.1%
\$100,000 - \$149,999	350	16.9%	364	17.1%	362	16.4%
\$150,000 - \$199,000	110	5.3%	219	10.3%	234	10.6%
\$200,000+	94	4.5%	204	9.6%	361	16.3%
Median Household Income	\$56,947		\$71,561		\$86,364	
Average Household Income	\$79,967		\$105,022		\$130,661	
Per Capita Income	\$39,113		\$51,829		\$64,456	

Population by Age	2000		2007		2012	
	Number	Percent	Number	Percent	Number	Percent
0 - 4	174	4.2%	171	4.0%	182	4.1%
5 - 9	156	3.7%	183	4.2%	165	3.7%
10 - 14	189	4.5%	143	3.3%	203	4.5%
15 - 19	187	4.5%	178	4.1%	145	3.2%
20 - 24	215	5.2%	191	4.4%	187	4.2%
25 - 34	455	10.9%	491	11.4%	522	11.7%
35 - 44	605	14.5%	488	11.3%	516	11.5%
45 - 54	704	16.9%	639	14.8%	643	14.4%
55 - 64	731	17.5%	776	18.0%	693	15.5%
65 - 74	482	11.6%	597	13.8%	680	15.2%
75 - 84	214	5.1%	376	8.7%	417	9.3%
85+	58	1.4%	79	1.8%	127	2.8%

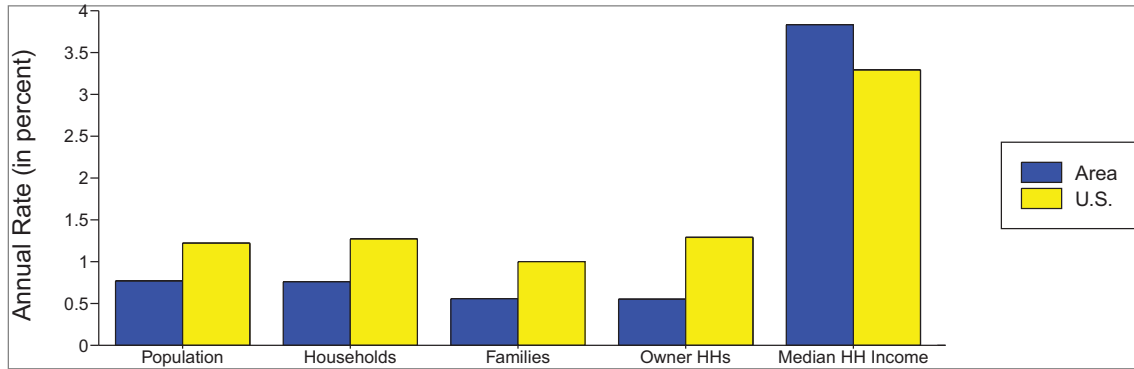
Race and Ethnicity	2000		2007		2012	
	Number	Percent	Number	Percent	Number	Percent
White Alone	3,738	89.6%	3,708	86.0%	3,733	83.3%
Black Alone	78	1.9%	103	2.4%	120	2.7%
American Indian Alone	21	0.5%	26	0.6%	29	0.6%
Asian Alone	163	3.9%	229	5.3%	285	6.4%
Pacific Islander Alone	7	0.2%	10	0.2%	12	0.3%
Some Other Race Alone	70	1.7%	117	2.7%	160	3.6%
Two or More Races	93	2.2%	119	2.8%	141	3.1%
Hispanic Origin (Any Race)	262	6.3%	430	10.0%	580	12.9%

Data Note: Income is expressed in current dollars.

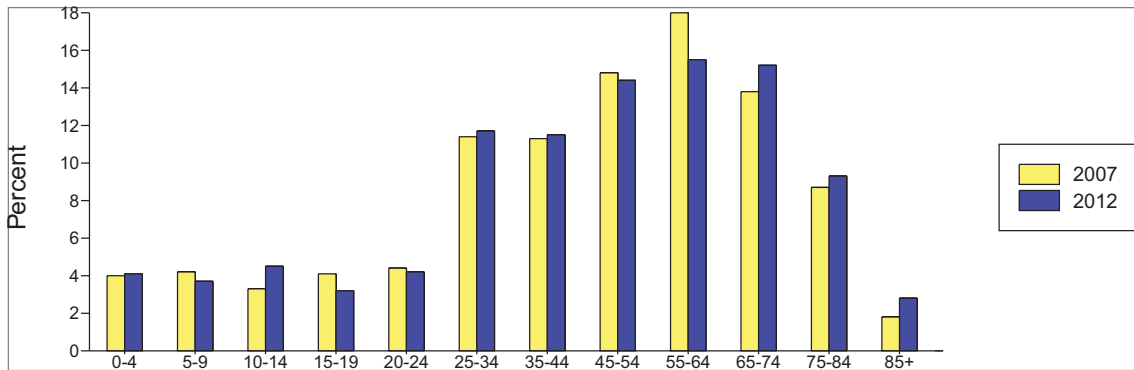
Source: U.S. Bureau of the Census, 2000 Census of Population and Housing. ESRI forecasts for 2007 and 2012.

Places: Nassau Bay city, TX

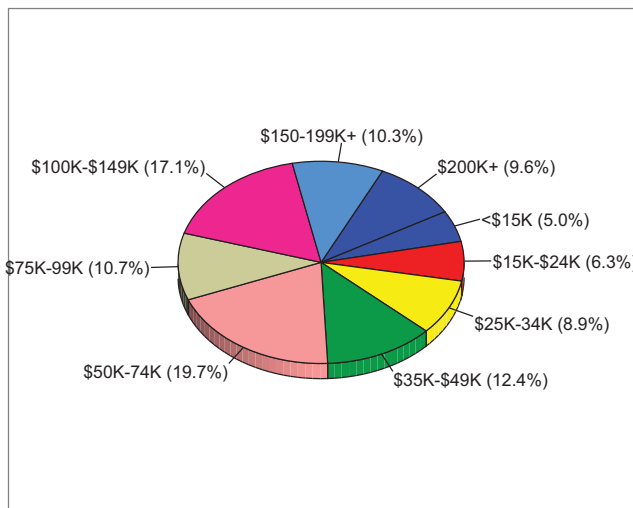
Trends 2007-2012



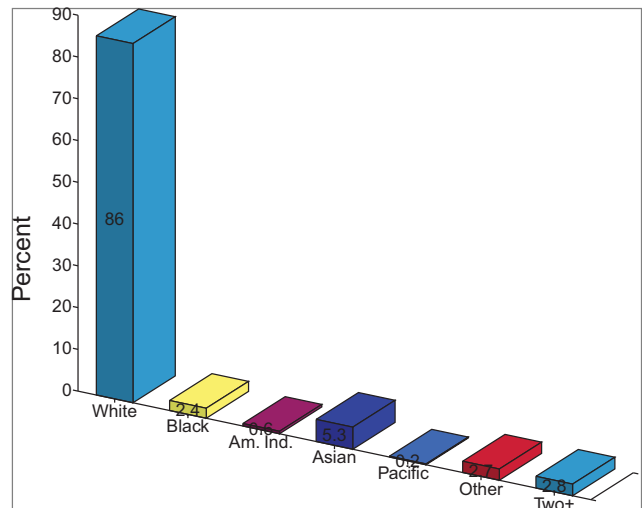
Population by Age



2007 Household Income



2007 Population by Race



2007 Percent Hispanic Origin: 10.0%